



Engin@Fire

Fire Integrated Revolutionary Engineering



COMPANY
PROFILE

THE NETWORK'S PARTNERS



A pioneering European company active since the end of the '70s, EnginSoft SpA is a key player in Computer-Aided Engineering (CAE) and intelligent Digital Prototyping (iDP), as well as in process simulation and design chain optimization.



idesa: Integrated Design Evolutionary System Approach
idesa is a dynamic and innovative company adopting evolutionary system engineering competences in railway, automotive, building and luxury design markets. idesa is a member of CONFINDUSTIA- ASSIFER-ANIE an Italian federation representing the mail electrotechnical and electronic companies. Continuous Research & Development investments and care to improvements are key factors for idesa: high potential startup company.



LA.P.I. is a private laboratory active since 1983 in the field of industrial analysis and testing. Specialized in fire characterization of materials and items (an area in which plays a leading role at European level), for some time now LA.P.I. operates in other sectors of analyses as well.

ENGIN@FIRE TARGETS

TARGETS

PROTECTION - SAFETY - ACCOMPLISHMENT - BUDGET SAVING



THE CONCEPT

Engin@Fire arises from the intuition of EnginSoft S.p.A. Idesa S.r.l. and LAPI S.p.A. about the chance to offer fully integrated services in the field of Fire Protection Engineering.



By means of a pragmatic methodology not only based on a wide knowledge of standards/regulations but also on a state-of-the-art Virtual Prototyping capabilities coupled, when necessary, to experimental tests of validation, Engin@Fire intends to accentuate the so-called performance-based approach aiming to maximize the benefits of a fire protection integrated design in the full respect of standard and regulations and customer requests.

Assessment of Rules and Law:

- *individuation of applicable STDs and Rules*
- *data management and technical requirements definition*
- *assessment*

Fire Risk Analysis and assessment

Fire Hazard Analysis Techniques

Engineering and Product Development:

- *design coordination and system engineering*
- *evaluation of the compatibility of the design approaches to fire protection*

Technical Dossier development

Validation Process Setting

NUMERICAL SIMULATION & HPC



Fire and Soot Spread, Flame Penetration

Pyrolysis Models and Calibration

Extinguishment (Water Mist, Inert Gas and more)

Smoke Detection

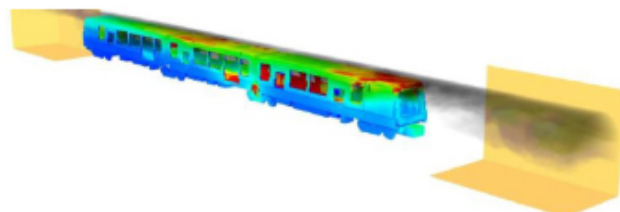
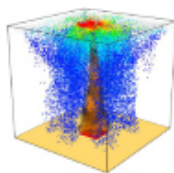
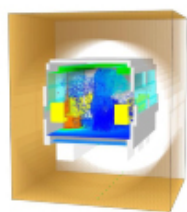
HRR and released Energy evaluation

Evacuation and Egress (fire started or "evacuation drill")

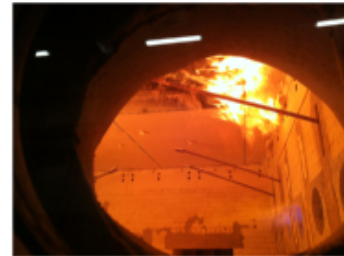
Multidisciplinary approach

Custom Solutions

High Performance Computing workstation and clusters



LAPI is Notified Body for the Marine Directive and for the Construction Product Regulation. LAPI works in accordance with EN 17020, EN 17021 and EN 17025 as an Inspection, Certification and Testing body. Among other things, its business activities are in the field of laboratories for the fire testing and, in that context, has acquired a thorough and in-depth knowledge of all topics related to tests on materials and/or components related to fire safety, provided for that purpose a fully equipped and duly certified testing laboratories which cover a primary role at the European level.



INDUSTRIAL SECTORS

Mass Transport Systems
Civil Engineering
Aeronautics
Oil & Gas
Energy
Naval



...and more